

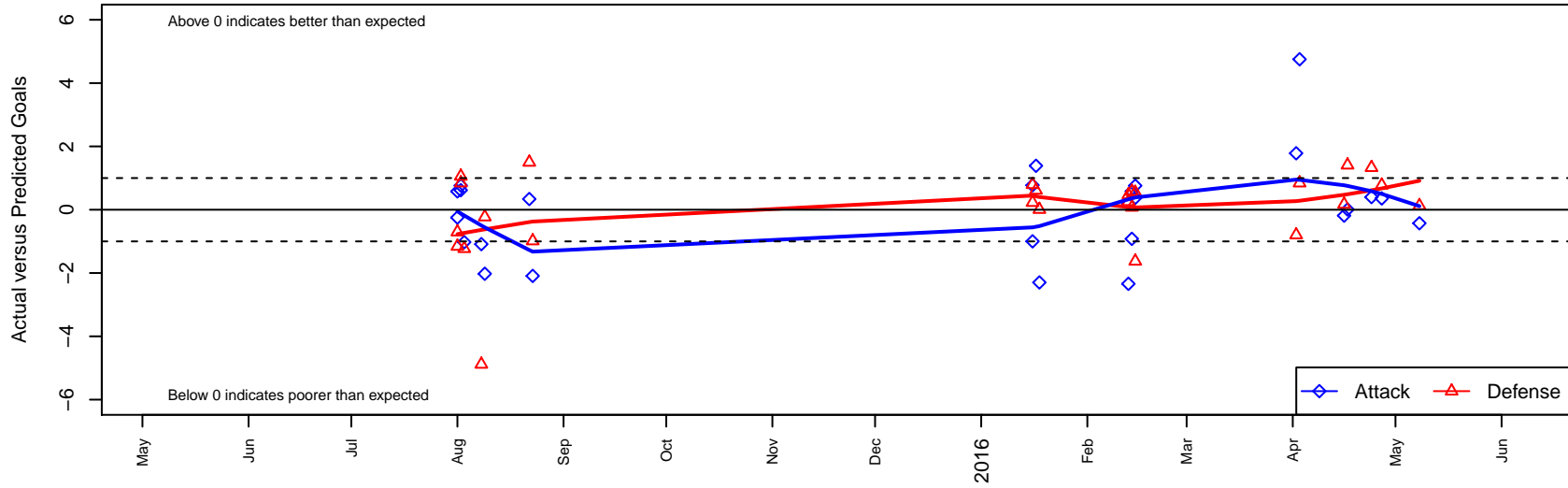
FC Golden State Black B01

FC Golden State
 Pasadena, CAS
 B01 total strength=1703
 attack=30.33 defense=17.2

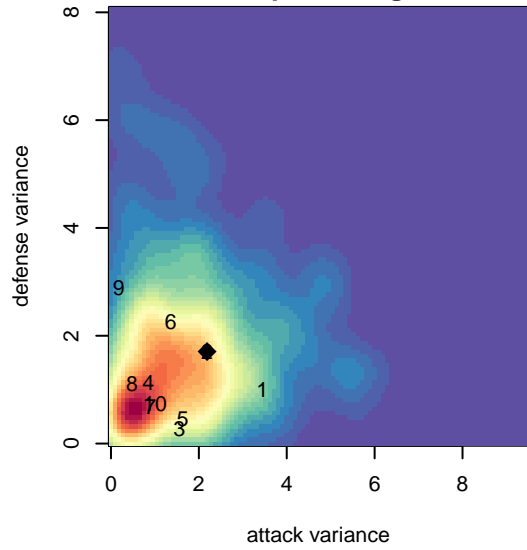
alt names used:
 FC Golden State – B01 Black
 FC GOLDEN STATE B01 BLACK (CAS)
 FC GOLDEN STATE BLACK
 FC GOLDEN STATE B01 BLACK (CAS)

Venues played:
 2015 Surf Cup Surf Super Cup U14
 2015 FWRL CAS B01
 2015 Vegas MLK Cup Gold U14
 2015 Vegas Mayors Showcase Chapman Auto

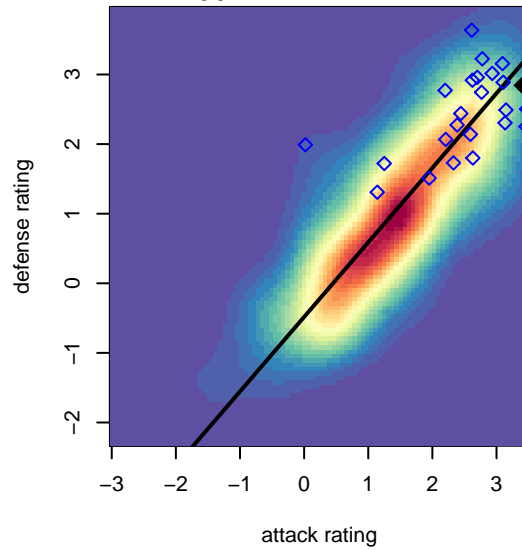
FC Golden State Black B01
 Dots are actual minus expected GF (blue circles) and GA (red triangles).
 Blue line is smoothed change in attack strength. Red is smoothed change in defense strength.



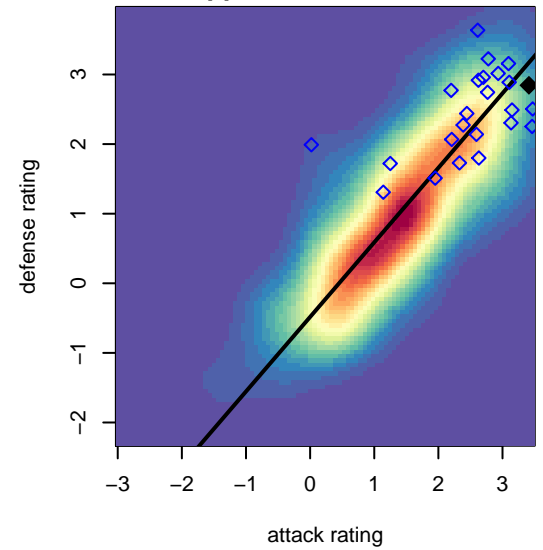
**attack and defense variance (black dot)
relative to other teams
and top 10 in region**



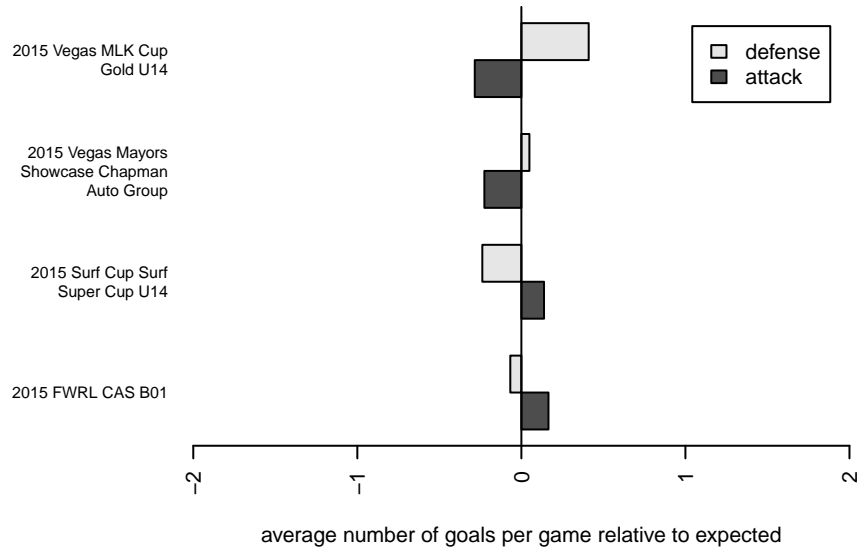
**attack and defense rating
relative to others at age
and all opponents in last 13 months**



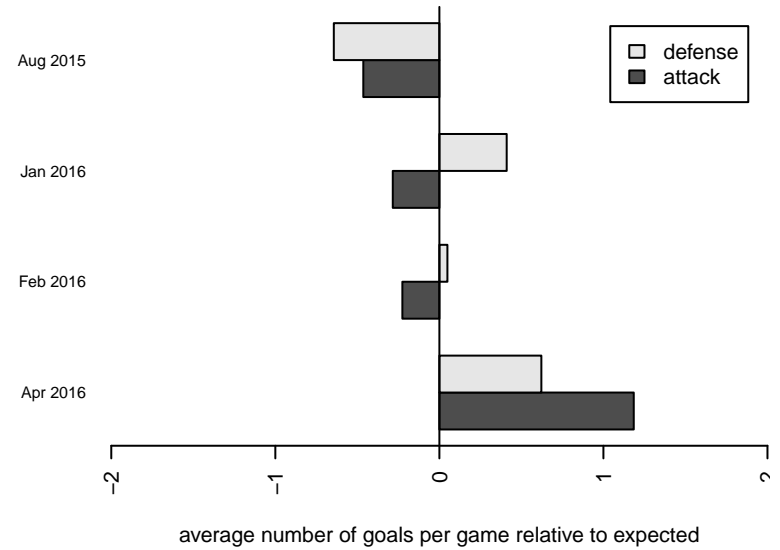
**attack and defense rating
relative to others at age
and all opponents in last 13 months**



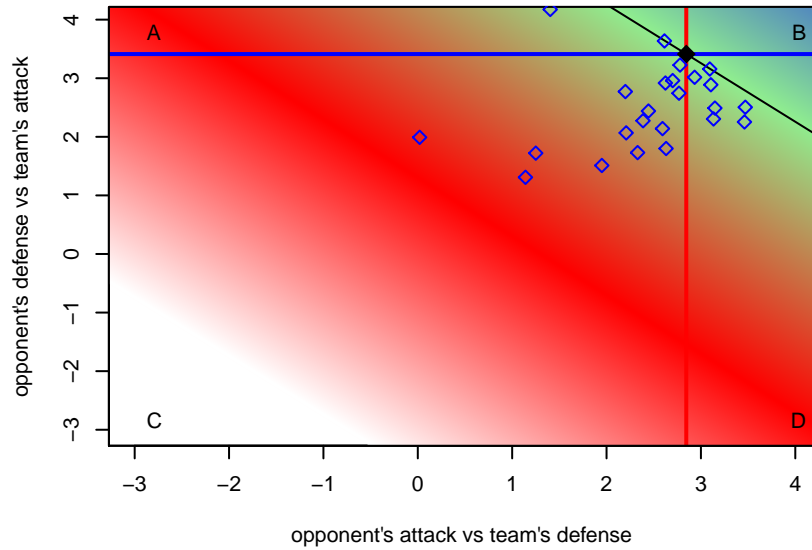
Performance relative to 13 month average



Performance relative to 13 month average



Distribution of opponents
 Red = Lose zone, Blue = Win zone, Green = Even
 Black line separates win/lose zones



lot. A=Neither has attack advantage, B=Opponent has both attack and defense advantage, C=Opponent has both attack and defense disadvantage, D=Both have

| date | home | | away | | venue | pred.home | pred.away |
|------------|--------------------------------|---|-----------------------------------|---|---|-----------|-----------|
| 2016-05-08 | FC Golden State Black B01 | 4 | LA Galaxy South Bay Gold B01 | 1 | 2015 FWRL CAS B01 | 4.43 | 1.13 |
| 2016-04-27 | Pateadores IER B01 | 0 | FC Golden State Black B01 | 2 | 2015 FWRL CAS B01 | 0.78 | 1.64 |
| 2016-04-24 | FC Golden State Black B01 | 1 | FC Los Angeles Black B01 | 0 | 2015 FWRL CAS B01 | 0.60 | 1.33 |
| 2016-04-17 | La Esperanza B01 | 0 | FC Golden State Black B01 | 2 | 2015 FWRL CAS B01 | 1.41 | 1.99 |
| 2016-04-16 | Fullerton Rangers White B01 | 1 | FC Golden State Black B01 | 2 | 2015 FWRL CAS B01 | 1.17 | 2.19 |
| 2016-04-03 | FC Golden State Black B01 | 7 | San Diego Surf SC Academy I B01 | 1 | 2015 FWRL CAS B01 | 2.25 | 1.84 |
| 2016-04-02 | FC Golden State Black B01 | 3 | South LA Nomads B01 | 2 | 2015 FWRL CAS B01 | 1.22 | 1.20 |
| 2016-02-15 | Strikers FC SB Black B01 | 1 | FC Golden State Black B01 | 2 | 2015 Vegas Mayors Showcase Chapman Auto | 1.54 | 1.62 |
| 2016-02-15 | Tuzos 02 B01 | 3 | FC Golden State Black B01 | 2 | 2015 Vegas Mayors Showcase Chapman Auto | 1.37 | 1.24 |
| 2016-02-14 | FC Golden State Black B01 | 3 | Rio Rapids SC Strikers White B01 | 0 | 2015 Vegas Mayors Showcase Chapman Auto | 3.92 | 0.08 |
| 2016-02-14 | FC Golden State Black B01 | 2 | San Tan Legacy Red B01 | 1 | 2015 Vegas Mayors Showcase Chapman Auto | 1.42 | 1.58 |
| 2016-02-13 | Chicago Fire Juniors South B01 | 0 | FC Golden State Black B01 | 4 | 2015 Vegas Mayors Showcase Chapman Auto | 0.47 | 6.34 |
| 2016-02-13 | FC Golden State Black B01 | 8 | Forza FC 02 West B01 | 0 | 2015 Vegas Mayors Showcase Chapman Auto | 7.81 | 0.26 |
| 2016-01-18 | FC Golden State Black B01 | 1 | Liverpool FC America 02 Elite B01 | 2 | 2015 Vegas MLK Cup Gold U14 | 3.30 | 2.01 |
| 2016-01-17 | FC Golden State Black B01 | 5 | Scottsdale 02 Blackhawks B01 | 0 | 2015 Vegas MLK Cup Gold U14 | 3.61 | 0.61 |
| 2016-01-16 | FC Golden State Black B01 | 2 | Downtown LVSC 02 Academy B01 | 0 | 2015 Vegas MLK Cup Gold U14 | 3.00 | 0.79 |
| 2016-01-16 | FC Golden State Black B01 | 6 | Colorado Rush B01 | 0 | 2015 Vegas MLK Cup Gold U14 | 5.23 | 0.23 |
| 2015-08-23 | FC Golden State Black B01 | 2 | Oxnard PAL Blue B01 | 2 | 2015 FWRL CAS B01 | 4.09 | 1.01 |
| 2015-08-22 | FC Golden State Black B01 | 2 | LA Premier B01 | 1 | 2015 FWRL CAS B01 | 1.66 | 2.50 |
| 2015-08-09 | FC Golden State 02 PDA B01 | 2 | FC Golden State Black B01 | 0 | 2015 FWRL CAS B01 | 1.77 | 2.02 |
| 2015-08-08 | Albion SC White B01 | 6 | FC Golden State Black B01 | 2 | 2015 FWRL CAS B01 | 1.12 | 3.09 |
| 2015-08-03 | FC Golden State Black B01 | 1 | FC Golden State 02 PDA B01 | 3 | 2015 Surf Cup Surf Super Cup U14 | 2.02 | 1.77 |
| 2015-08-02 | Solar Chelsea 02 Red B01 | 0 | FC Golden State Black B01 | 3 | 2015 Surf Cup Surf Super Cup U14 | 0.84 | 2.38 |
| 2015-08-02 | Real Colorado Nationals B01 | 0 | FC Golden State Black B01 | 3 | 2015 Surf Cup Surf Super Cup U14 | 1.06 | 2.24 |
| 2015-08-01 | FC Golden State Black B01 | 1 | Norcal PDP 2002B | 1 | 2015 Surf Cup Surf Super Cup U14 | 0.42 | 0.30 |
| 2015-08-01 | FC Golden State Black B01 | 2 | San Diego Surf SC Academy I B01 | 3 | 2015 Surf Cup Surf Super Cup U14 | 2.25 | 1.84 |